

New Magia Turning Line

LT 1000 | LT 1005 | LT 1025



LAMINA
TECHNOLOGIES

LT 1000 | PVD grade

Recommended for general use

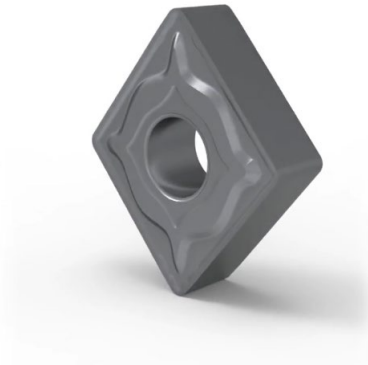
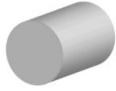


Multi-Mat™

SPEED



STABLE CONDITIONS



- The most versatile grade of Magia Turning line
- Excellent combination of hardness & toughness.
- The first choice for customers with short production runs, different machining applications and different types of workpiece materials.

LT 1005 | CVD grade

Recommended for stable conditions , moderate to high speed

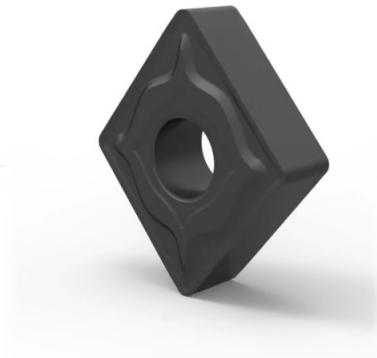
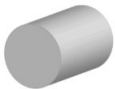
NEW



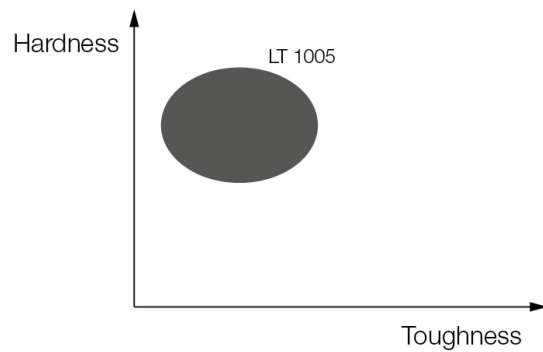
SPEED



STABLE CONDITIONS



- Increased hardness and wear resistance at high temperatures make this grade well suited for stable conditions and higher cutting speeds.
- Highly resistant to plastic deformation thus maintaining high dimensional tolerances



LT 1025 | CVD grade

Recommended for unstable conditions, moderate to low speed

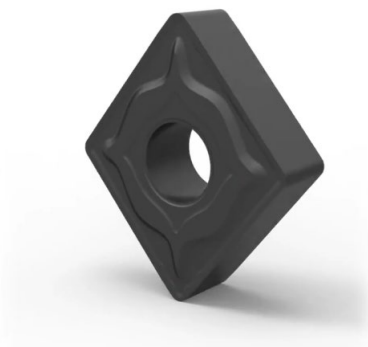
NEW



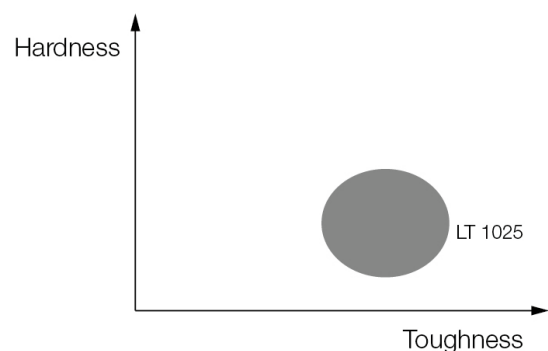
SPEED





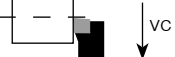
UNSTABLE CONDITIONS

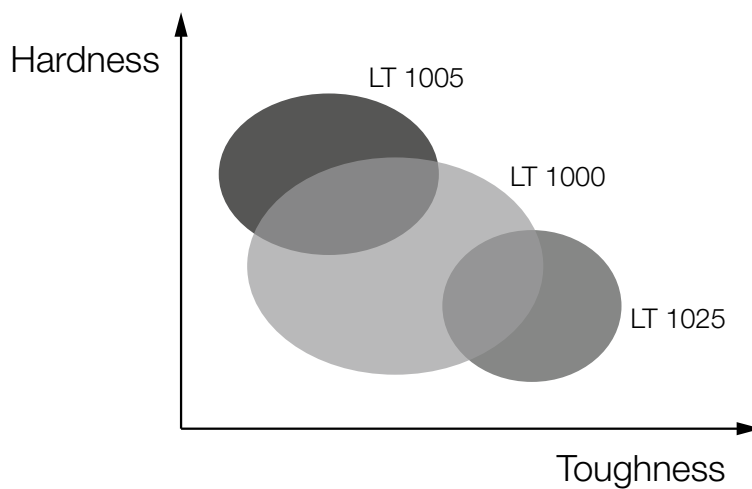


- Increased toughness makes this grade excellent for unstable conditions, such as interrupted cut.
- The low chemical affinity between top ceramic layer and workpiece material ensures low friction and increased resistance to built-up edge development even at low cutting speeds in facing applications.



Grade recommendations

Material Group *= 1st choice grade	High speeds Stable Conditions 	Interrupted Cut Unstable Conditions 	Low speeds Facing to center 	Wear Resistance x Toughness
P	*LT1005 LT 1000 LT 1025	LT 1000 *LT 1025	LT1005 LT 1000 *LT 1025	↑ harder ↓ tougher
M	LT1005 *LT 1000 LT 1025	LT 1000 *LT 1025	LT 1000 *LT 1025	↑ harder ↓ tougher
K	*LT1005 LT 1000 LT 1025	LT 1000 *LT 1025	LT1005 *LT 1000 LT 1025	↑ harder ↓ tougher
S	*LT 1000	*LT 1000	*LT 1000	↑ harder ↓ tougher
H	LT1005 *LT 1000	LT1005 *LT 1000	LT1005 *LT 1000	↑ harder ↓ tougher
N (>8%Si)	*LT 1000	*LT 1000	*LT 1000	↑ harder ↓ tougher



LT 1005 | New CVD grade

Recommended for stable conditions,
moderate to high speed



Designation	Catalog Nr.	Availability
CNMA 120408 LT 1005	T0004050	In stock
CNMA 120412 LT 1005	T0004051	In stock
DNMA 150608 LT 1005	T0003241	In stock
DNMA 150612 LT 1005	T0003242	In stock
SNMA 120408 LT 1005	T0003239	In stock
SNMA 120412 LT 1005	T0003240	In stock
TNMA 160408 LT 1005	T0002837	In stock
TNMA 160412 LT 1005	T0003238	In stock
WNMA 080408 LT 1005	T0002840	In stock
WNMA 080412 LT 1005	T0002841	In stock
CNMG 120408 NM LT 1005	T0004053	In stock
CNMG 120408 NN LT 1005	T0004054	In stock
CNMG 120408 NX LT 1005	T0004055	November
CNMG 120412 NN LT 1005	T0004056	In stock
DNMG 110408 NN LT 1005	T0004059	November
DNMG 150408 NN LT 1005	T0004061	In stock
DNMG 150408 NX LT 1005	T0004062	In stock
DNMG 150608 NX LT 1005	T0004063	In stock
DNMG 150412 NN LT 1005	T0004064	November
DNMG 150608 NN LT 1005	T0004067	In stock
DNMG 150612 NN LT 1005	T0004068	November
SNMG 120408 NN LT 1005	T0004076	In stock
SNMG 120408 NX LT 1005	T0004077	In stock
SNMG 120412 NN LT 1005	T0004078	November
TNMG 160408 NN LT 1005	T0004082	In stock
TNMG 160408 NX LT 1005	T0004083	In stock
TNMG 160412 NN LT 1005	T0004084	In stock
TNMG 220408 NN LT 1005	T0004086	November
TNMG 220408 NX LT 1005	T0004087	November
TNMG 220412 NN LT 1005	T0004088	November
VNMG 160408 NN LT 1005	T0004095	In stock
WNMG 060408 NN LT 1005	T0004099	November
WNMG 060408 NX LT 1005	T0004100	November
WNMG 080408 NM LT 1005	T0004102	In stock
WNMG 080408 NN LT 1005	T0004103	In stock
WNMG 080408 NX LT 1005	T0004104	November
WNMG 080412 NN LT 1005	T0004105	In stock
WNMP 080408 NN LT 1005	T0004106	November



LT 1025 | New CVD grade

Recommended for unstable conditions,
moderate to low speed



Designation	Catalog Nr.	Availability
CNMM 120408 NR LT 1025	T0004115	December
CNMM 120412 NR LT 1025	T0004116	December
CNMG 120408 NM LT 1025	T0004111	November
CNMG 120408 NN LT 1025	T0004112	In stock
CNMG 120408 NX LT 1025	T0004113	In stock
CNMG 120412 NN LT 1025	T0004114	In stock
CNMP 120408 NN LT 1025	T0004117	November
CNMP 120412 NN LT 1025	T0004118	November
DNMG 110408 NN LT 1025	T0004119	November
DNMG 150408 NN LT 1025	T0004121	November
DNMG 150408 NX LT 1025	T0004122	November
DNMG 150608 NX LT 1025	T0004123	November
DNMG 150412 NN LT 1025	T0004124	December
DNMG 150608 NN LT 1025	T0004126	November
DNMG 150612 NN LT 1025	T0004127	December
SNMG 120408 NN LT 1025	T0004133	In stock
SNMG 120408 NX LT 1025	T0004134	In stock
SNMG 120412 NN LT 1025	T0004136	November
TNMG 160408 NN LT 1025	T0004138	In stock
TNMG 160408 NX LT 1025	T0004139	November
TNMG 160412 NN LT 1025	T0004140	November
TNMG 220408 NN LT 1025	T0004142	In stock
TNMG 220408 NX LT 1025	T0004143	December
TNMG 220412 NN LT 1025	T0004144	November
TNMP 160408 NN LT 1025	T0004145	November
VNMG 160408 NN LT 1025	T0004149	November
WNMG 060408 NN LT 1025	T0004150	November
WNMG 060408 NX LT 1025	T0004151	December
WNMG 080408 NM LT 1025	T0004153	November
WNMG 080408 NN LT 1025	T0004154	In stock
WNMG 080408 NX LT 1025	T0004155	In stock
WNMG 080412 NN LT 1025	T0004156	In stock
WNMP 080408 NN LT 1025	T0004157	December

